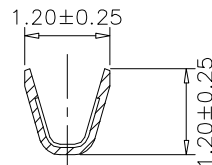
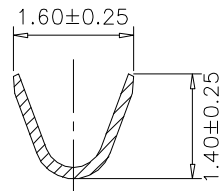
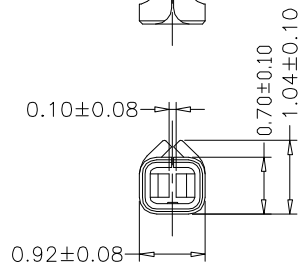
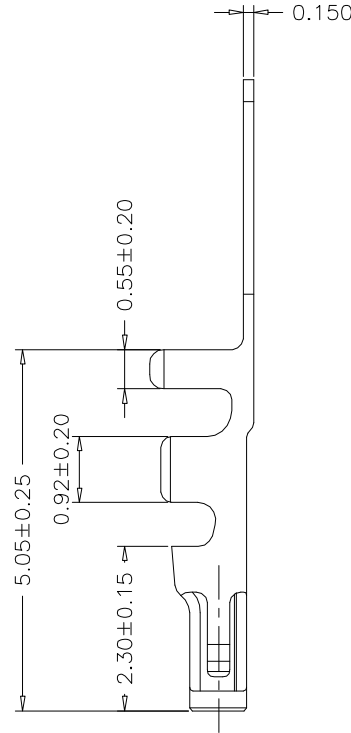
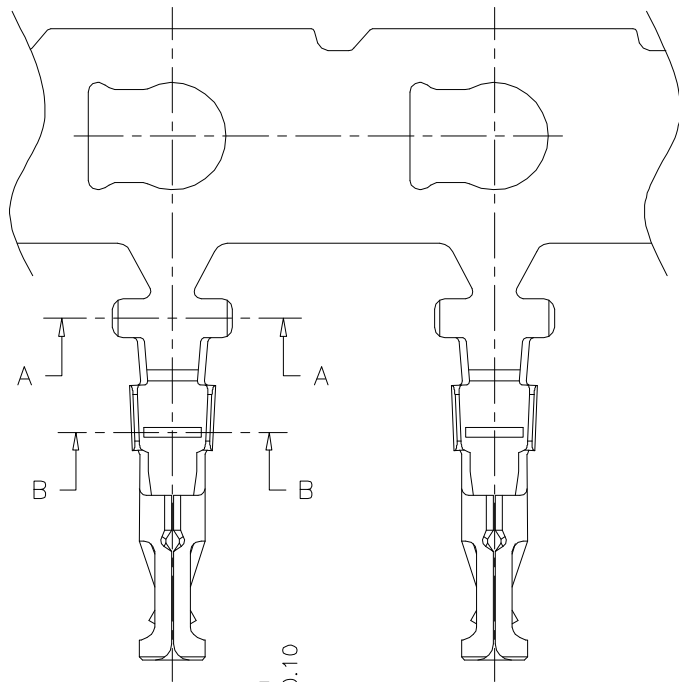


RoHS



SECTION A-A

SECTION B-B

Specification:

- Current Rating: 1A AC/DC
- Voltage Rating: 150V AC/DC
- Insulation Resistance: 500MΩ(Min)
- Contact resistance: 30mΩ(Max).
- Withstanding Voltage: 500VAC(Min)
- Operation Temperature: -35°C to +85°C



Material:

- Wire Range: 28AWG~32AWG
- Insulation O.D: 0.9mm Max
- Material: Phosphor Bronze, T=0.15mm
- Finish: Tin Plated/Gold Plated

Ordering Information

SCT1255T P \* 134

Material:  
P=Phosphor Bronze  
S=Tin Plated  
G=Gold Plated

					OPERATION	DRAW	Peng	2021.07.05	SCALE	-	 SCONDAR ELECTRONIC LIMITED	
					X.X ±0.35	DESIGN			UNIT	mm		
					X.XX ±0.25		CHECK	Lisa	2021.07.05	SIZE		A4
					X.XXX ±0.15	APPROVE	Allen	2021.07.05	SHEET	1/1		PART NO.
REV	DATE	MODIFICATION DESCRIPTION		CHANGE	APPROVE				PROJ.		TITLE:	JAE 1.25mm Terminal

