

RoHS

Recommended P.C.B Layout
General Tolerance±0.05

Specification:

- Current Rating: 0.5A AC/DC
- Voltage Rating: 30V AC/DC
- Insulation Resistance: 100MΩ Min
- Withstanding Voltage: 200VAC(1Min)
- Contact resistance: 20mΩ(Max).
- Operation Temperature: -25°C to +85°C

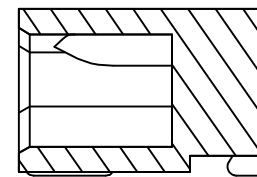
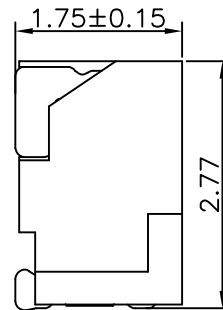
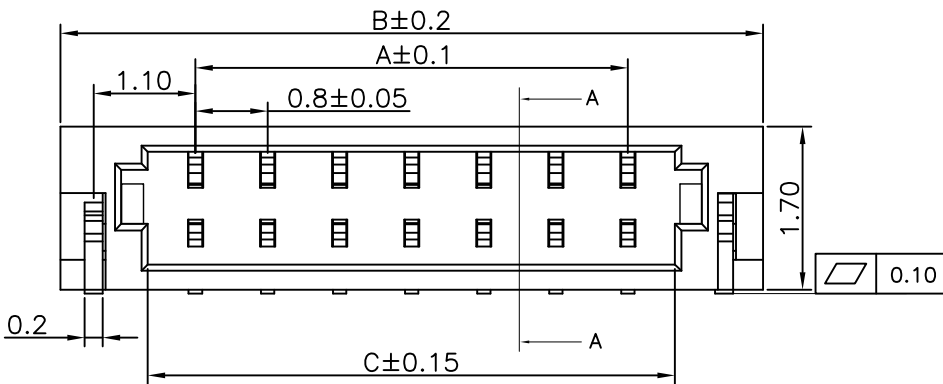
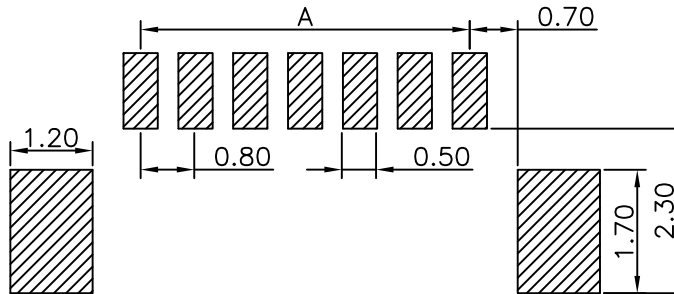
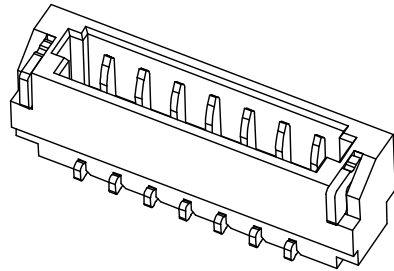
Material:

- Insulator (Housing): LCP (UL94V-0)
- Contacts:Phosphor Bronze/Gold Plated
- Color: Beige、 Black

Ordering Information

SCT0800WRS - ** F 1 BE 501

No.of Pins See Table Insulation F=LCP Package 1=Tape&Reel Color BE=Beige



Section A-A

11	8.00	11.00	9.10				
10	7.20	10.20	8.30	20	15.20	18.20	16.30
9	6.40	9.40	7.50	19	14.40	17.40	15.50
8	5.60	8.60	6.70	18	13.60	16.60	14.70
7	4.80	7.80	5.90	17	12.80	15.80	13.90
6	4.00	7.00	5.10	16	12.00	15.00	13.10
5	3.20	6.20	4.30	15	11.20	14.20	12.30
4	2.40	5.40	3.50	14	10.40	13.40	11.50
3	1.60	4.60	2.70	13	9.60	12.60	10.70
2	0.80	3.80	1.90	12	8.80	11.8	9.90
Poles	A	B	C	Poles	A	B	C
	Dimensions				Dimensions		

REV	DATE	MODIFICATION DESCRIPTION	CHANGE	APPROVE	OPERATION	DRAW	Peng	2021.07.05	SCALE	-	 SCONDAR ELECTRONIC LIMITED
A1	2021.07.05	Changed from SCT0800WR-S-xxP to SCT0800WRS-xxF1BE501			X.X	±0.35			UNIT	mm	
AO	2006.05.02	NEW			X.XX	±0.25			SIZE	A4	
					X.XXX	±0.15			SHEET	1/1	
					Angle	± 3'			PART NO.	SCT0800WRS-xxF1BE501	
					DIM	TOL			PROJ.	 TITLE: 0.80mm Pitch SMT 90° Wafer Connector	