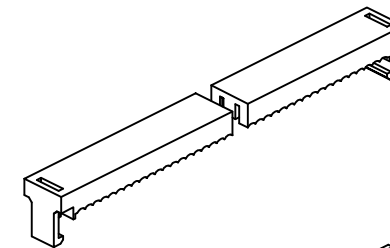
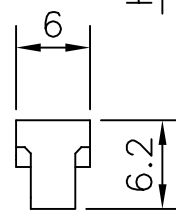
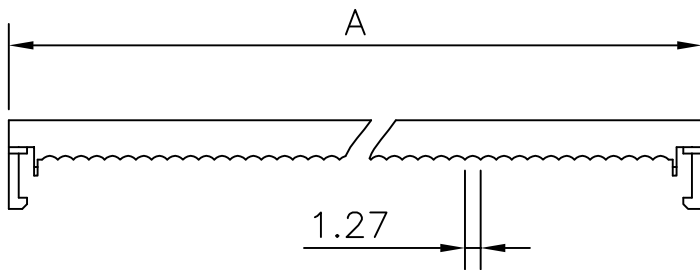


MATERIALS:

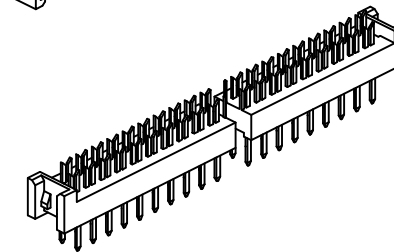
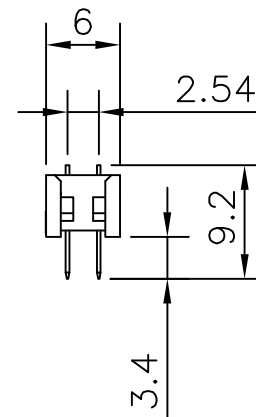
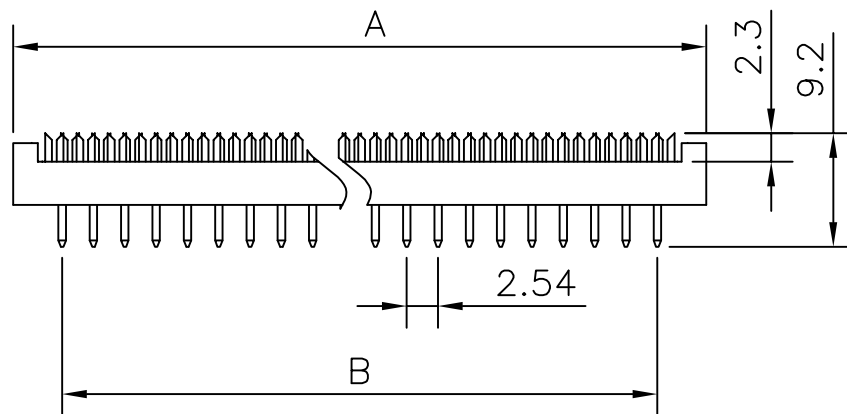
INSULATOR:P.B.T.30%GLASS FIBER,UL94V-0
 COLOR: BLACK or GRAY
 CONTACTS:BRASS OR PHOSPHOR BRONZE,
 SELECTIVE GOLD FLASH OVER NICKEL
 OR TIN PLATED


ELECTRICAL:

CURRENT RATING:1AMP.
 INSULATION RESISTANCE:1000M Ω MIN.
 DIELECTRIC WITHSTANDING:500VAC
 OPERATING TEMPERATURE:-55 °C~+105° C



CONTACTS	A	B
6P	12.94	5.08
8P	15.48	07.62
10P	18.10	10.16
12P	20.51	12.70
14P	23.25	15.24
16P	25.64	17.78
18P	28.15	20.32
20P	30.78	22.86
24P	35.86	27.94
26P	38.40	30.48
28P	40.60	33.02
30P	43.50	35.56
34P	48.58	40.64
40P	56.20	48.26
50P	69.00	60.96
60P	81.75	73.66
64P	86.83	78.74



						OPERATION	DRAW			SCALE		 森康达电子有限公司 S'CONDAR ELECTRONIC LIMITED	
						~ 10 ±0.15	DESIGN			UNIT	mm		
						20 ~ 30 ±0.30	CHECK			SIZE	A4	PART NO.	IDC254H630-FD-2-XXP
0	05/12/27		NEW			30 ~ ±0.50	APPROVE			SHEET	1/1	TITLE:	FD插板 二件套
REV	DATE		MODIFICATION DESCRIPTION	CHANGE	APPROVE	Angle ± 2'				PROJ.			
						DIM TOL							