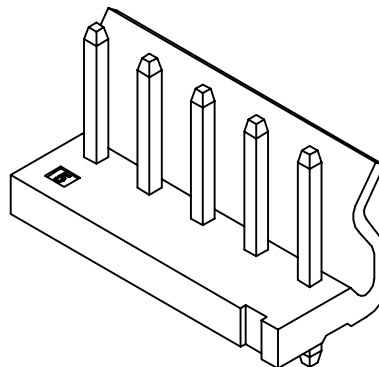
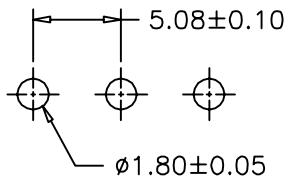
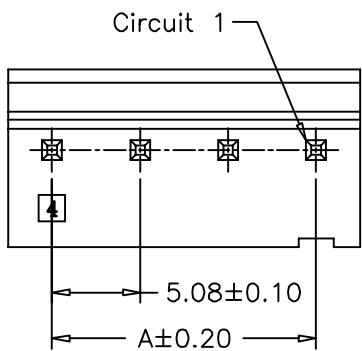


1 2 3 4 5 6 7 8 9 10

A
B
C
D
E
F
G

A
B
C
D
E
F
G

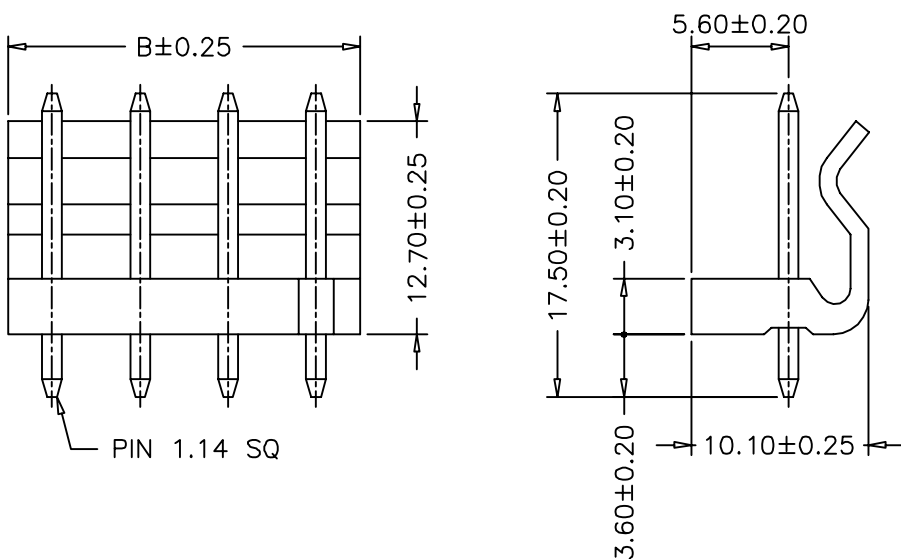


SPECIFICATIONS

Current Rating: 7A AC,DC
 Voltage Rating: 250V AC,DC
 Temperature Range: -25°C ~ +85°C
 Contact Resistance: 10mΩ Max
 Insulation Resistance: 1000MΩ Min
 Withstanding Voltage: 1500V AC/minute
 Pin Material: Brass/Tin-plated
 Material: Nylon 66,UL94V-2
 Color: Natural(Translucent)

Ordering Information & Dimensions

PART NO.	Dimensions	
	A	B
SCT5080WV-02P	5.08	10.16
SCT5080WV-03P	10.16	15.24
SCT5080WV-04P	15.24	20.32
SCT5080WV-05P	20.32	25.40
SCT5080WV-06P	25.40	30.48
SCT5080WV-07P	30.48	35.56
SCT5080WV-08P	35.56	40.64
SCT5080WV-09P	40.64	45.72
SCT5080WV-10P	45.72	50.80
SCT5080WV-11P	50.80	55.88
SCT5080WV-12P	55.88	60.96
SCT5080WV-13P	60.96	66.04
SCT5080WV-14P	66.04	71.12
SCT5080WV-15P	71.12	76.20
SCT5080WV-16P	76.20	81.28
SCT5080WV-17P	81.28	86.36
SCT5080WV-18P	86.36	91.44
SCT5080WV-19P	91.44	96.52
SCT5080WV-20P	96.52	101.60



					OPERATION	DRAW			SCALE	森康达电子有限公司 SCONDAR ELECTRONIC LIMITED
					~ 10 ±0.15	DESIGN			UNIT mm	
					20 ~ 30 ±0.30	CHECK			SIZE A4	
0	05/12/27	NEW			30 ~ ±0.50	APPROVE			SHEET 1/1	
REV	DATE	MODIFICATION DESCRIPTION	CHANGE	APPROVE	Angle ± 2'				TITLE: MX5.08 180C WF	
					DIM TOL				PROJ.	DRAWING NO. SCT5080

1 2 3 4 5 6 7 8 9 10