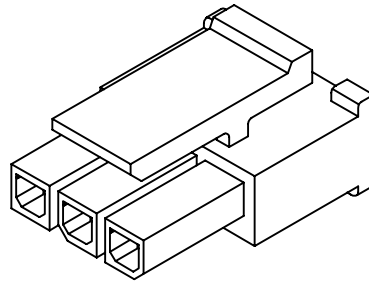
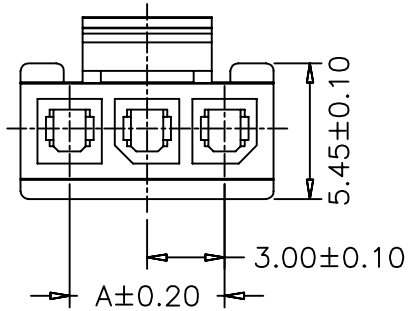


1 2 3 4 5 6 7 8 9 10

A  
B  
C  
D  
E  
F  
G



**SPECIFICATIONS**

Voltage Rating: 250V AC/DC

Current Rating: 5A AC/DC

Withstanding Voltage: 1500V AC/minute

Insulation Resistance: 1000MΩ min.

Temperature Range: -25° C - +85° C

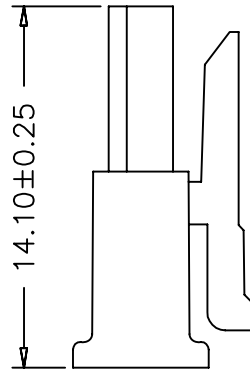
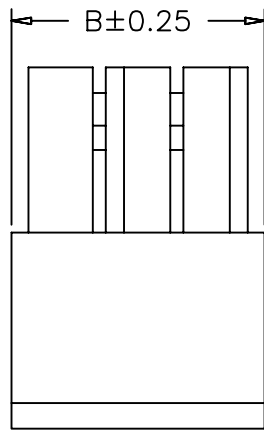
Contact Resistance: 20mΩ max

**HOUSING**

Part No: SCT3001MH-XXP


Poles: 2-12

Material: Nylon 66, UL94V-2



PART NO.	Dimensions	
	A	B
SCT3001MH-2P	3.00	6.80
SCT3001MH-3P	6.00	9.80
SCT3001MH-4P	9.00	12.80
SCT3001MH-5P	12.00	15.80
SCT3001MH-6P	15.00	18.80
SCT3001MH-7P	18.00	21.80
SCT3001MH-8P	21.00	24.80
SCT3001MH-9P	24.00	27.80
SCT3001MH-10P	27.00	30.80
SCT3001MH-11P	30.00	33.80
SCT3001MH-12P	33.00	36.80

H

					OPERATION	DRAW	JUDY	2007.05.09	SCALE		 <b>森康达电子有限公司</b> SCONDAR ELECTRONIC LIMITED	
					~ 10 ±0.15	DESIGN			UNIT	mm		
					20 ~ 30 ±0.30	CHECK	MICKY	2007.05.09	SIZE	A4	PART NO.	SCT3001MH-XXP
0	05/12/27				30 ~ ±0.50	APPROVE	HELLEN	2007.05.09	SHEET	1/1	TITLE:	MOLEX3.0 MALE HOUSING
REV	DATE	MODIFICATION DESCRIPTION	CHANGE	APPROVE	Angle ± 2'				PROJ.	↺	DRAWING NO.	SCT3001
					DIM TOL							

1 2 3 4 5 6 7 8 9 10