

**SPECIFICATIONS**

Voltage Rating: 250V AC/DC

Current Rating: 2A AC/DC

Withstanding Voltage: 500V AC/minute

Insulation Resistance: 1000MΩ min.

Temperature Range: -25° C - +85° C

Contact Resistance: 20mΩ max

**HOUSING**

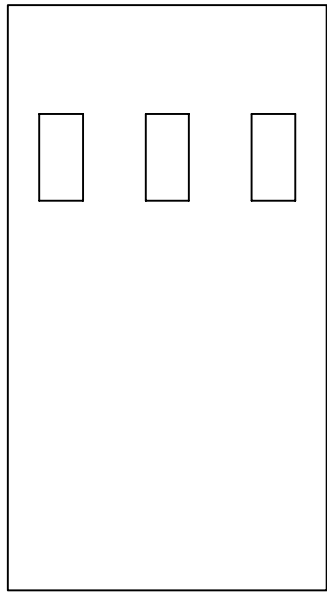
Part No: SCT2540MH-XXP-B

Poles: 2-25

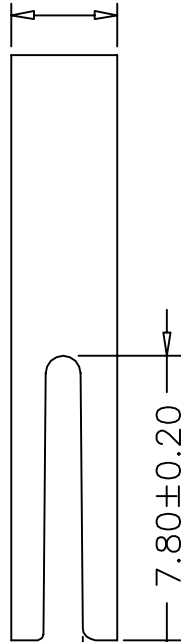
Material: Nylon 66, UL94V-0

$B \pm 0.25$

$3.00 \pm 0.20$



$14.80 \pm 0.25$



$7.80 \pm 0.20$

$0.94 \pm 0.15$

PART NO.	Dimensions		PART NO.	Dimensions	
	A	B		A	B
SCT2540MH-02P-B	2.54	5.08	SCT2540MH-13P-B	30.48	33.02
SCT2540MH-03P-B	5.08	7.62	SCT2540MH-14P-B	33.02	35.56
SCT2540MH-04P-B	7.62	10.16	SCT2540MH-15P-B	35.56	38.10
SCT2540MH-05P-B	10.16	12.70	SCT2540MH-16P-B	38.10	40.64
SCT2540MH-06P-B	12.70	15.24	SCT2540MH-17P-B	40.64	43.18
SCT2540MH-07P-B	15.24	17.78	SCT2540MH-18P-B	43.18	45.72
SCT2540MH-08P-B	17.78	20.32	SCT2540MH-19P-B	45.72	48.26
SCT2540MH-09P-B	20.32	22.86	SCT2540MH-20P-B	48.26	50.80
SCT2540MH-10P-B	22.86	25.40	SCT2540MH-21P-B	50.80	53.34
SCT2540MH-11P-B	25.40	27.94	SCT2540MH-22P-B	53.34	55.88
SCT2540MH-12P-B	27.94	30.48	SCT2540MH-23P-B	55.88	58.42
SCT2540MH-13P-B	30.48	33.02	SCT2540MH-24P-B	58.42	60.96
SCT2540MH-14P-B	33.02	35.56	SCT2540MH-25P-B	60.96	63.50

					OPERATION	DRAW	Judy.Huang	2006/05/02	SCALE		森康达电子有限公司 SCONDAR ELECTRONIC LIMITED	
					~ 10 ±0.15	DESIGN			UNIT	mm		
					20 ~ 30 ±0.30	CHECK	Micky.Liu	2006/05/02	SIZE	A4	PART NO.	SCT2540MH-XXP-B
					30 ~ ±0.50	APPROVE	Hellen.Li	2006/05/02	SHEET	1/1	TITLE:	AMP543 MALE B HOUSING
REV	DATE	MODIFICATION DESCRIPTION	CHANGE	APPROVE	Angle DIM				PROJ.	↺	DRAWING NO.	SCT2540