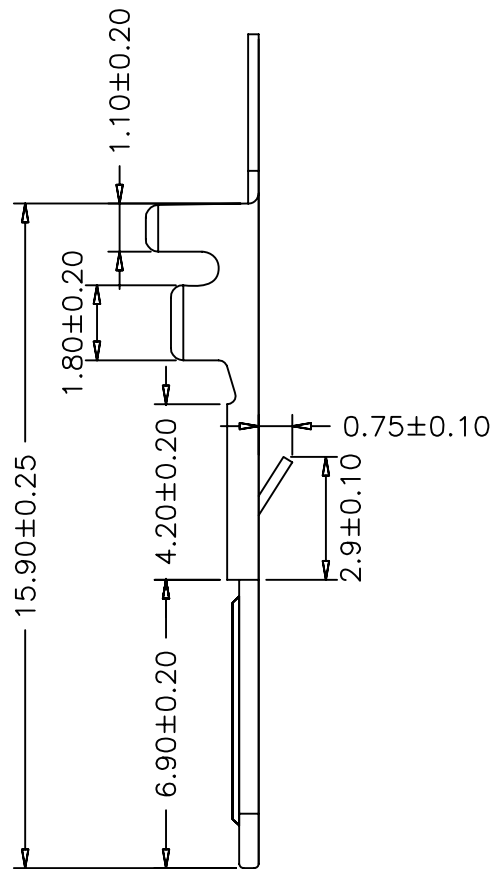
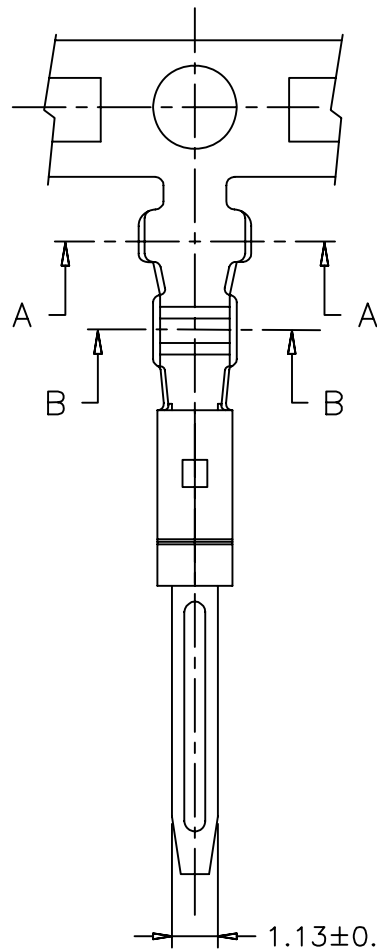


1 2 3 4 5 6 7 8 9 10

A
B
C
D
E
F
G

A
B
C
D
E
F
G

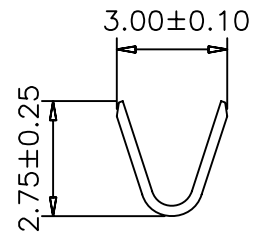


SPECIFICATIONS

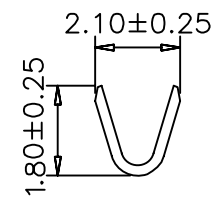
Voltage Rating: 250V AC/DC
 Current Rating: 3A AC/DC
 Withstanding Voltage: 1500V AC/minute
 Insulation Resistance: 500MΩ min.
 Temperature Range: -25° C - +85° C
 Contact Resistance: 20mΩ max

TERMINAL

Part No: SCT2505MT
 Wire Range: AWG#22-#28 (OD1.8mm)
 Material: Brass
 Finish: Tin Plated
 Thickness: 0.25mm
 Q'TY: 8,000PCS/Reel



A-A



B-B

| | | | | | | | | | | | | | |
|-----|------|--------------------------|--|--------|---------|---------------|---------|--------|------------|-------|-----|---|---------------------|
| | | | | | | OPERATION | DRAW | CHENA | 2004.09.11 | SCALE | | 森康达电子有限公司 SCONDAR ELECTRONIC LIMITED | |
| | | | | | | ~ 10 ±0.15 | DESIGN | | | UNIT | mm | | |
| | | | | | | 20 ~ 30 ±0.30 | CHECK | MICKY | 2004.09.14 | SIZE | A4 | PART NO. | SCT2505MT |
| | | | | | | 30 ~ ±0.50 | APPROVE | HELLEN | 2004.09.18 | SHEET | 1/1 | TITLE: | SM2.5 MALE TERMINAL |
| REV | DATE | MODIFICATION DESCRIPTION | | CHANGE | APPROVE | Angle DIM | | | | PROJ. | ☯ | DRAWING NO. | SCT2505 |

1 2 3 4 5 6 7 8 9 10