

1 2 3 4 5 6 7 8 9 10

A

B

C

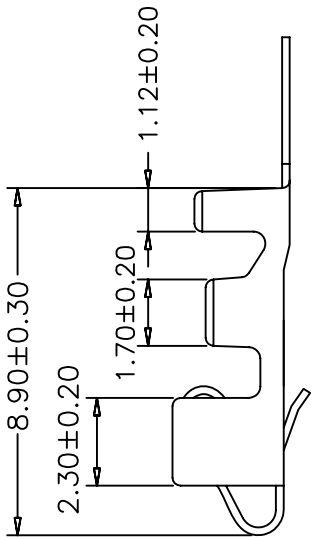
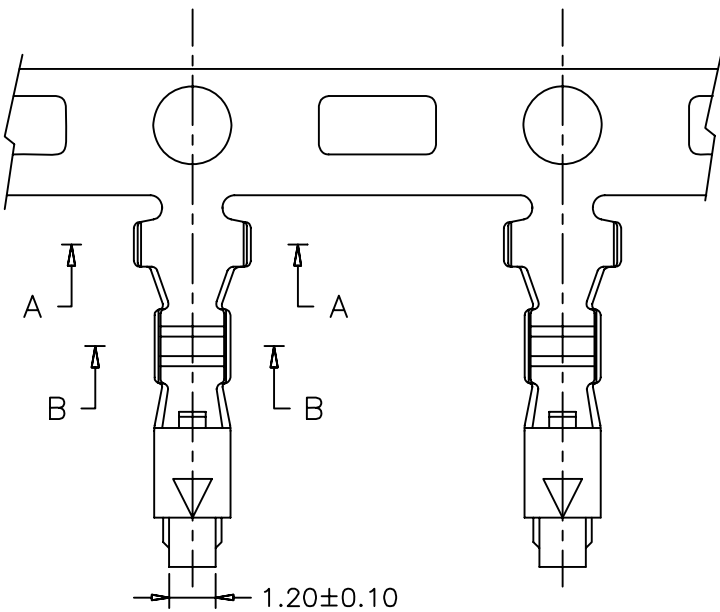
D

E

F

G

H

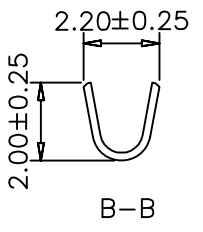
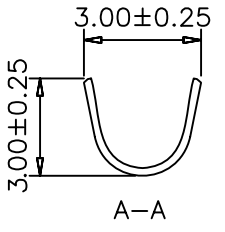
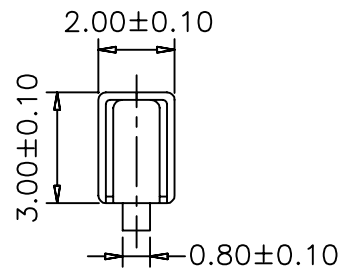



SPECIFICATIONS

Voltage Rating: 250V AC/DC
 Current Rating: 3A AC/DC
 Withstanding Voltage: 1500V AC/minute
 Insulation Resistance: 500MΩ min.
 Temperature Range: -25° C - +85° C
 Contact Resistance: 20mΩ max

TERMINAL

Part No: SCT2505FT
 Wire Range: AWG#22-#28 (OD1.8mm)
 Material: Brass
 Finish: Tin Plated
 Thickness: 0.2mm
 Q`TY: 5,000PCS/Reel



					OPERATION	DRAW	CHENA	2004.09.11	SCALE		 森康达电子有限公司 SCONDAR ELECTRONIC LIMITED	
					~ 10 ±0.15	DESIGN			UNIT	mm		
					20 ~ 30 ±0.30	CHECK	MICKY	2004.09.14	SIZE	A4	PART NO.	SCT2505FT
					30 ~ ±0.50	APPROVE	HELLEN	2004.09.18	SHEET	1/1	TITLE:	SM2.5 FEMALE TERMINAL
0	05/12/27	NEW			Angle ± 2'				PROJ.	⌀	DRAWING NO.	SCT2505
REV	DATE	MODIFICATION DESCRIPTION	CHANGE	APPROVE	DIM TOL							

1 2 3 4 5 6 7 8 9 10