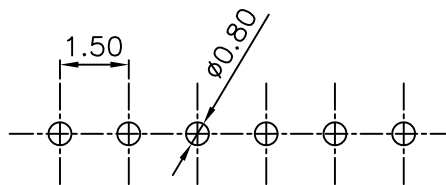
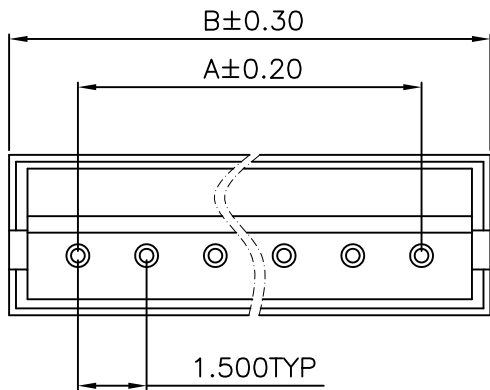


1 2 3 4 5 6 7 8 9 10

A  
B  
C  
D  
E  
F  
G



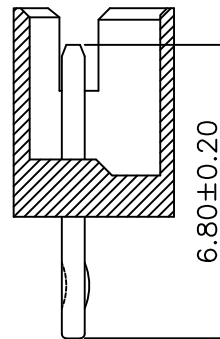
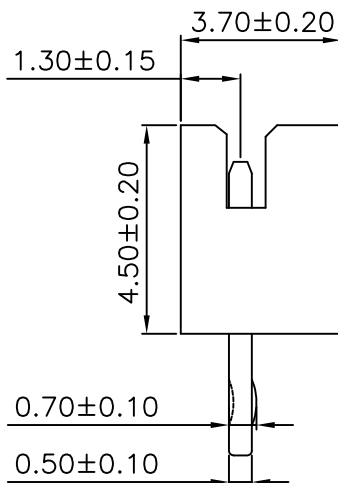
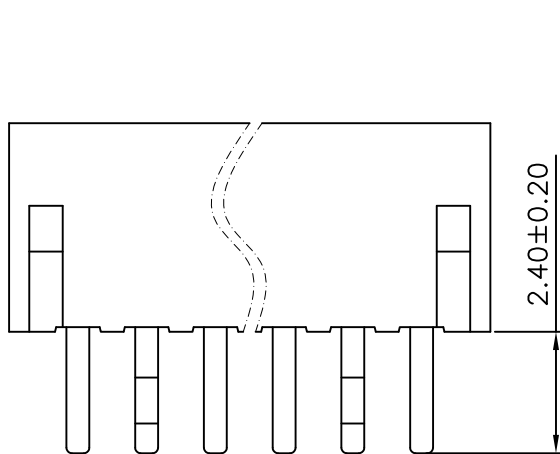
PCB LAYOUT

SPECIFICATIONS

Voltage rating: 100V AC, DC  
 Current rating: 1A, AC, DC (AWG#26)  
 Withstanding Voltage: 500V AC/minute  
 Insulation resistance: 500MΩ min  
 Temperature range: -25°C - +85°C  
 Contact resistance: 20mΩ max

WAFER

Part No: SCT1501WV-XXPB  
 Poles: 02-16  
 Material: Nylon 46, UL94V-0  
 Q' TY: 1000 pcs/bag



PART NO	DIMENSION	
	A	B
SCT1501WV-02 PB	1.50	4.50
SCT1501WV-03 PB	3.00	6.00
SCT1501WV-04 PB	4.50	7.50
SCT1501WV-05 PB	6.00	9.00
SCT1501WV-06 PB	7.50	10.50
SCT1501WV-07 PB	9.00	12.00
SCT1501WV-08 PB	10.50	13.50
SCT1501WV-09 PB	12.00	15.00
SCT1501WV-10 PB	13.50	16.50
SCT1501WV-11 PB	15.00	18.00
SCT1501WV-12 PB	16.50	19.50
SCT1501WV-13 PB	18.00	21.00
SCT1501WV-14 PB	19.50	22.50
SCT1501WV-15 PB	21.00	24.00
SCT1501WV-16 PB	22.50	25.50

A  
B  
C  
D  
E  
F  
G

H

H

					OPERATION	DRAW	Judy.Huang	2006/05/02	SCALE		森康达电子有限公司 SCONDAR ELECTRONIC LIMITED	
					~ 10	DESIGN			UNIT	mm		
					20 ~ 30	CHECK	Micky.Liu	2006/05/02	SIZE	A4		
					30 ~	APPROVE	Hellen.Li	2006/05/02	SHEET	1/1		
0	05/12/27				NEW				PROJECT	◆	PART NO.	SCT1501WV-XXPB
REV	DATE				MODIFICATION DESCRIPTION	CHANGE	APPROVE		PROJ.	◆	TITLE:	ZH1.5 180C WF
											DRAWING NO.	SCT1501

1 2 3 4 5 6 7 8 9 10