

1 2 3 4 5 6 7 8 9 10

A

B

C

D

E

F

G

H

A

B

C

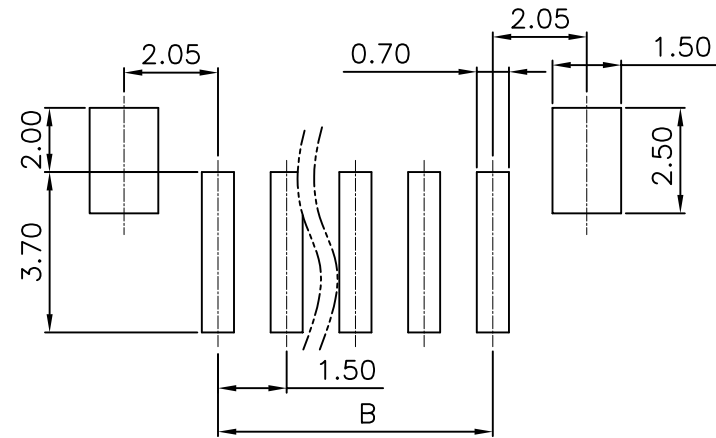
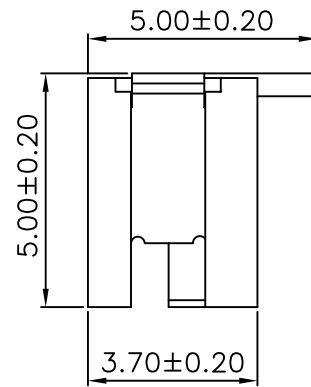
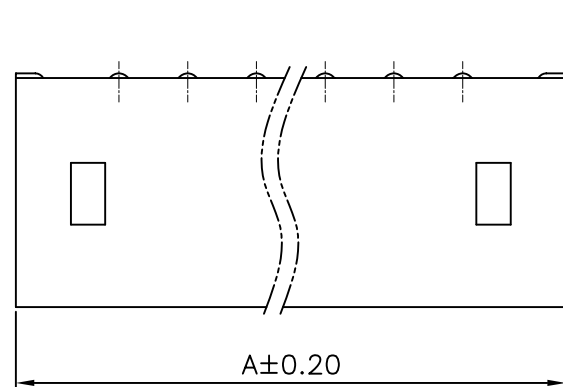
D

E

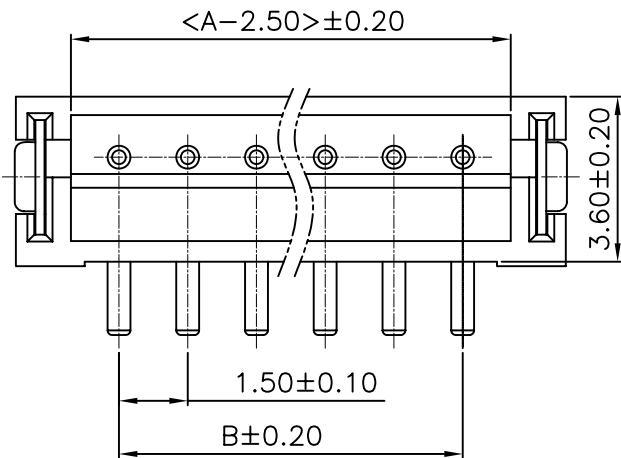
F

G

H



PCB Layout



SPECIFICATIONS

Voltage rating: 100V AC, DC
 Current rating: 1A, AC, DC (AWG#26)
 Withstanding Voltage: 500V AC/minute
 Insulation resistance: 500M Ω min
 Temperature range: -25°C - +85 °C
 Contact resistance: 20mΩ max

WAFER

Part No: SCT1501WV-S-XXPT
 Poles: 02-16
 Material: Nylon 46, UL94V-0
 Cotact: Brass, Tin plated
 Q' TY: 1000 pcs/bag

| PART NO. | Dimensions | |
|-------------------|------------|-------|
| | A | B |
| SCT1501WV-S-02 PT | 6.00 | 1.50 |
| SCT1501WV-S-03 PT | 7.50 | 3.00 |
| SCT1501WV-S-04 PT | 9.00 | 4.50 |
| SCT1501WV-S-05 PT | 10.50 | 6.00 |
| SCT1501WV-S-06 PT | 12.00 | 7.50 |
| SCT1501WV-S-07 PT | 13.50 | 9.00 |
| SCT1501WV-S-08 PT | 15.00 | 10.50 |
| SCT1501WV-S-09 PT | 16.50 | 12.00 |
| SCT1501WV-S-10 PT | 18.00 | 13.50 |
| SCT1501WV-S-11 PT | 19.50 | 15.00 |
| SCT1501WV-S-12 PT | 21.00 | 16.50 |
| SCT1501WV-S-13 PT | 22.50 | 18.00 |

| REV | DATE | MODIFICATION DESCRIPTION | CHANGE | APPROVE | OPERATION | DRAW | Judy.Huang | 2006/05/02 | SCALE | UNIT | mm | PART NO. | SCT1501WV-S-XXPT |
|-----|----------|--------------------------|--------|---------|-----------|-------|------------|------------|-------|------|----|----------|------------------|
| 0 | 05/12/27 | NEW | | | ~ 10 | ±0.15 | | | | | | | |
| | | | | | 20 ~ 30 | ±0.30 | | | | | | | |
| | | | | | 30 ~ | ±0.50 | | | | | | | |
| | | | | | Angle | ± 2' | | | | | | | |
| | | | | | DIM | TOL | | | | | | | |
| | | | | | APPROVE | | Hellen.Li | 2006/05/02 | | | | | |
| | | | | | PROJ. | | | | | | | | |

SCONDAR 森康达电子有限公司
 SCONDAR ELECTRONIC LIMITED

1 2 3 4 5 6 7 8 9 10