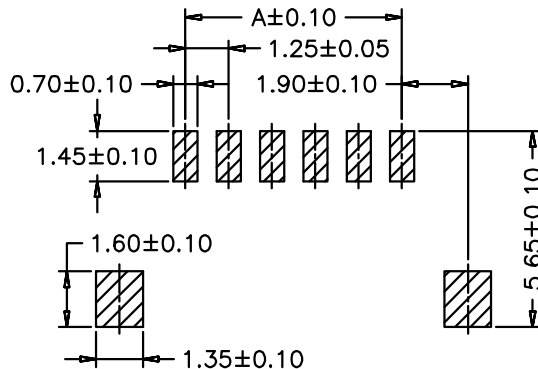
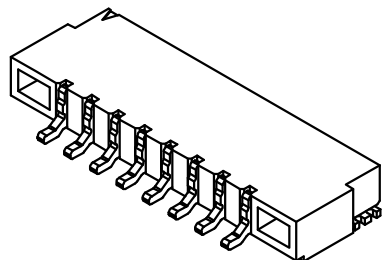


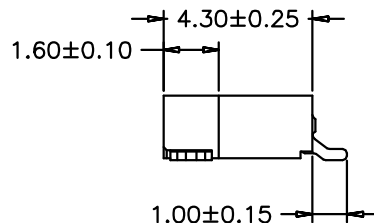
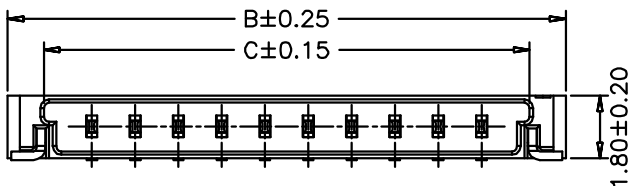
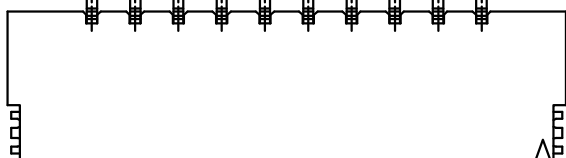
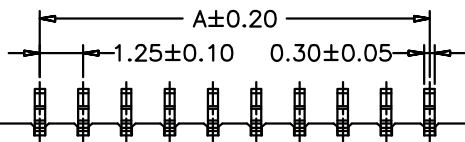
1 2 3 4 5 6 7 8 9 10

A
B
C
D
E
F
G

A
B
C
D
E
F
G



PCB LAYOUT



SPECIFICATIONS

Voltage rating: 200V AC, DC
 Current rating: 1A, AC, DC (AWG#28)
 Withstanding voltage: 500V AC/minute
 Insulation resistance: 100MΩ min
 Temperature range: -25°C - +85°C
 Contact resistance: 40mΩ max

WAFER

Part No. :SCT1255WR-S-XXP
 Material:Nylon 6T, UL94V-0
 Contact: Brass, Gold plated
 Solder Tabs:Brass, Tin plated

PART NO.	Dimensions		
	A	B	C
SCT1255WR-S-2P	1.25	6.10	4.01
SCT1255WR-S-3P	2.50	7.35	5.26
SCT1255WR-S-4P	3.75	8.60	6.51
SCT1255WR-S-5P	5.00	9.85	7.76
SCT1255WR-S-6P	6.25	11.10	9.01
SCT1255WR-S-8P	8.75	13.60	11.51
SCT1255WR-S-10P	11.25	16.10	14.01
SCT1255WR-S-15P	17.50	22.35	20.26
SCT1255WR-S-20P	23.75	28.60	26.51
SCT1255WR-S-25P	30.00	34.85	32.76
SCT1255WR-S-30P	36.25	41.10	39.01

					OPERATION	DRAW	JUDY	2007.05.12	SCALE		森康达电子有限公司 S'CONDAR ELECTRONIC LIMITED		
					~ 10 ±0.15	DESIGN			UNIT	mm			
					20 ~ 30 ±0.30	CHECK	MICKY	2007.05.12	SIZE	A4		PART NO.	SCT1255WR-S-XXP
					30 ~ ±0.50	APPROVE	HELLEN	2007.05.12	SHEET	1/1		TITLE:	JAE1.25(FI-S) SMT 90C WAFER
					Angle ± 2' DIM TOL				PROJ.	↔		DRAWING NO.	SCT1255
0	05/12/27	NEW											
REV	DATE	MODIFICATION DESCRIPTION	CHANGE	APPROVE									

1 2 3 4 5 6 7 8 9 10