

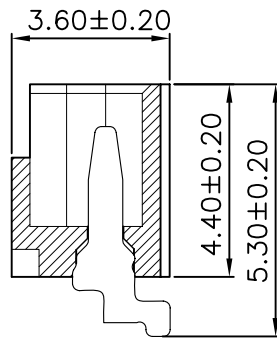
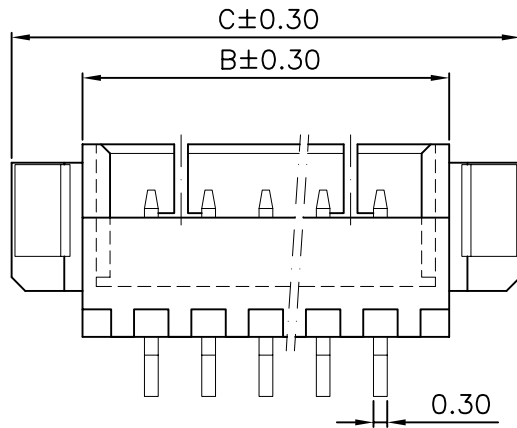
PCB LAYOUT

SPECIFICATIONS

Voltage rating: 125V AC, DC
 Current rating: 1A, AC, DC (AWG#26)
 Withstanding voltage: 500V AC/minute
 Insulation resistance: 100M Ω min
 Temperature range: -40 °C - +85°C
 Contact resistance: 20m Ω max

WAFER

Part No.: SCT1251WR-S-XXP
 Poles: 2-16
 Material: Nylon 9T, UL94V-0
 Contact: Brass, Tin plated



| PART NO | DIMENSION | | |
|----------------|-----------|-------|-------|
| | A | B | C |
| SCT1251WR-S-02 | 1.25 | 4.25 | 7.35 |
| SCT1251WR-S-03 | 2.50 | 5.50 | 8.60 |
| SCT1251WR-S-04 | 3.75 | 6.75 | 9.85 |
| SCT1251WR-S-05 | 5.00 | 8.00 | 11.10 |
| SCT1251WR-S-06 | 6.25 | 9.25 | 12.35 |
| SCT1251WR-S-07 | 7.50 | 10.50 | 13.60 |
| SCT1251WR-S-08 | 8.75 | 11.75 | 14.85 |
| SCT1251WR-S-09 | 10.00 | 13.00 | 16.10 |
| SCT1251WR-S-10 | 11.25 | 14.25 | 17.35 |
| SCT1251WR-S-11 | 12.50 | 15.50 | 18.60 |
| SCT1251WR-S-12 | 13.75 | 16.75 | 19.85 |
| SCT1251WR-S-13 | 15.00 | 18.00 | 21.10 |
| SCT1251WR-S-14 | 16.25 | 19.25 | 22.35 |
| SCT1251WR-S-15 | 17.50 | 20.50 | 23.60 |
| SCT1251WR-S-16 | 18.75 | 21.75 | 24.85 |

| | | | | | | | | | | | | | |
|-----|----------|--------------------------|--------|---------|--------------|-------------|-----------|------------|------------|-------|---|-------------|----------------------|
| | | | | | OPERATION | DRAW | Micky.Liu | 2006/05/02 | SCALE | | 森康达电子有限公司 SCONDAR ELECTRONIC LIMITED | | |
| | | | | | ~ 10 | ±0.15 | | | UNIT | mm | | | |
| | | | | | 20 ~ 30 | ±0.30 | | | SIZE | A4 | | PART NO. | SCT1251WR-S-XXP |
| 0 | 05/12/27 | | | | 30 ~ | ±0.50 | | | SHEET | 1/1 | | TITLE: | MX1.25 90C SMT WAFER |
| REV | DATE | MODIFICATION DESCRIPTION | CHANGE | APPROVE | Angle DIM | ± 2' TOL | APPROVE | Hellen.Li | 2006/05/02 | PROJ. | ◆ | DRAWING NO. | SCT1251 |