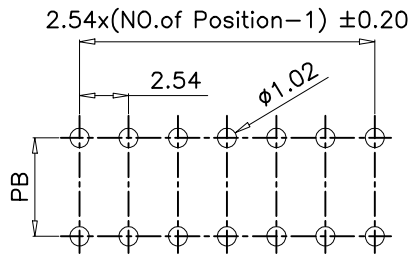
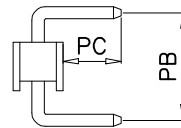
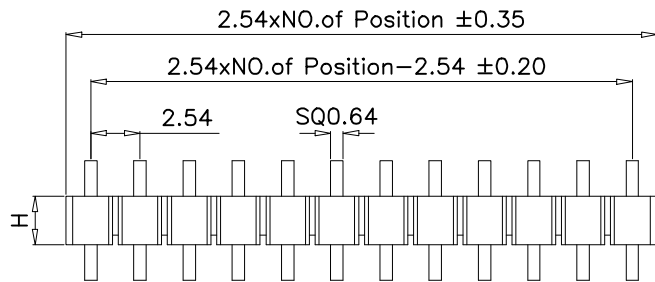
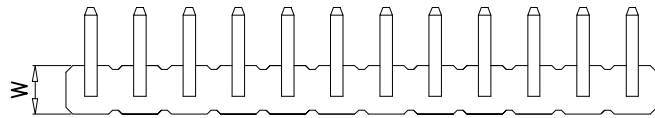


1 2 3 4 5 6 7 8 9 10

A
B
C
D
E
F
G
H

A
B
C
D
E
F
G
H



P.C.B LAYOUT

SPECIFICATIONS

Current Rating:3 Amps
 Insulator Resistance:1000 Megohms Min.
 Withstanding Voltage:500V AC/minute
 Temperature Range: -40~+105°
 Contact material:Brass
 Finish: Gold or Tin plated
 Insulator Material:PBT
 Soldering Temperature:+220°C,10S max

Dimension						
H	W	PA	PB	PC	PD	PW
1.50	2.50	/	4.55	3.00	/	/
1.70	2.50	/	4.75	3.00	/	/
2.00	2.50	/	5.05	3.00	/	/
2.50	2.50	/	5.55	3.00	/	/

PH254Hxx-U-XXxP

Insulator height
 1.5mm:150
 1.70mm:170
 2.00mm:200
 2.50mm:250

No. of Circuits
 1: Single row
 2: Dual row
 ST: Straight 180°
 RT: Right-angle 90°
 SMT: Surface-Mount

					OPERATION	DRAW	SIMON	2010.03.06	SCALE		森康达电子有限公司 SCONDAR ELECTRONIC LIMITED	
					~ 10 ±0.15	DESIGN			UNIT	mm		
					20 ~ 30 ±0.30	CHECK	MICKY	2010.03.06	SIZE	A4	PART NO.	PH254Hxx-U-2xXXP
0	05/12/27	NEW			30 ~ ±0.50	APPROVE	HELLEN	2010.03.06	SHEET	1/1	TITLE	2.54mm Pin Header Single Row "U" Dip Type
REV	DATE	MODIFICATION DESCRIPTION	CHANGE	APPROVE	Angle DIM	± 2' TOL			PROJ.	◆ ←		

1 2 3 4 5 6 7 8 9 10