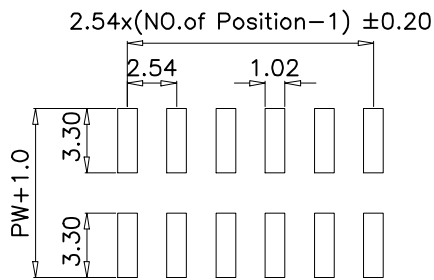
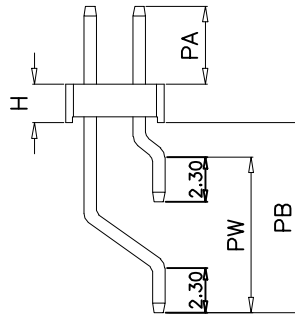
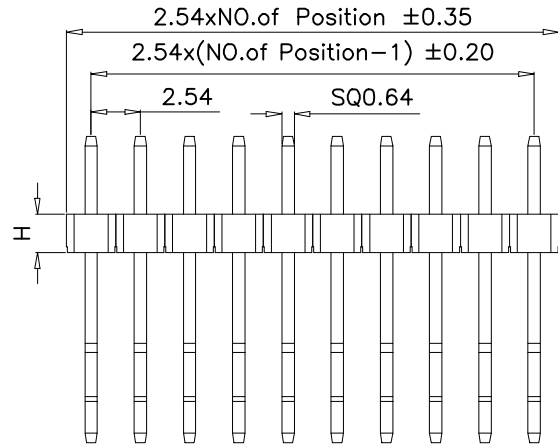
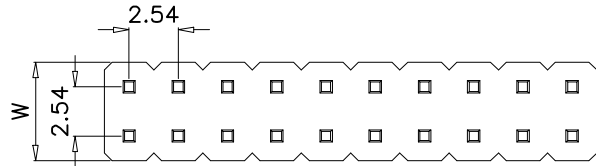


1 2 3 4 5 6 7 8 9 10



P.C.B LAYOUT

**SPECIFICATIONS**

Current Rating:3 Amps  
 Insulator Resistance:1000 Megohms Min.  
 Withstanding Voltage:500V AC/minute  
 Temperature Range: -40~+105°  
 Contact material:Brass  
 Finish: Gold or Tin plated  
 Insulator Material:PBT  
 Soldering Temperature:+220°C,10S max

Dimension						
H	W	PA	PB	PC	PD	PW
1.50	5.00	6.00	/	10.4	/	7.70
1.70	5.00	6.00	/	10.4	/	7.70
2.00	5.00	6.00	/	10.4	/	7.70
2.50	5.00	6.00	/	10.4	/	7.70

PH254Hxx-90C-SMT-XxxP

Insulator height  
 1.5mm: 150  
 1.70mm: 170  
 2.00mm: 200  
 2.50mm: 250

No. of Circuits  
 1: Single row  
 2: Dual row  
 ST: Straight 180°  
 RT: Right-angle 90°  
 SMT: Surface-Mount

					OPERATION	DRAW	SIMON	2010.03.06	SCALE		<b>森康达电子有限公司</b> SCONDAR ELECTRONIC LIMITED	
					~ 10 ±0.15	DESIGN			UNIT	mm		
					20 ~ 30 ±0.30	CHECK	MICKY	2010.03.06	SIZE	A4	PART NO.	PH254Hxx-90C-SMT-2xXXP
0	05/12/27		NEW		30 ~ ±0.50	APPROVE	HELLEN	2010.03.06	SHEET	1/1	TITLE	2.54mm Pin Header Dual Row 90C SMT Type
REV	DATE		MODIFICATION DESCRIPTION	CHANGE	APPROVE	Angle DIM			PROJ.	◆ ←		

1 2 3 4 5 6 7 8 9 10