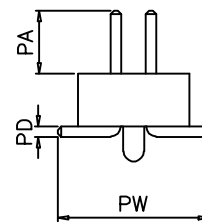


P.C.B LAYOUT



SPECIFICATIONS

Current Rating: 0 75 Amps
 Insulation Resistance: 1000 Megohms Min
 Withstanding Voltage: 300V AC/minute
 Temperature Range: 40~+105°
 Contact material: Brass
 Finish: Gold or Tin plated
 Insulation Material: Polyethylene 6T, UL94V 0
 Soldering Temperature: +220°C, 10S max

Dimension						
H	W	PA	PB	PC	PD	PW
1.00	2.40	1.80	/	/	0.3	4.2
1.50	3.17	1.80	/	/	0.3	4.2

PH100Hxx-SF-XXxP

Insulator height
 1.0mm: 100
 1.5mm: 150

ST: Straight 180°
 RT: Right-angle 90°
 SMT: Surface-Mount
 SF: SMT with pegs

No. of Circuits
 1: Single row
 2: Dual row

REV	DATE	MODIFICATION DESCRIPTION	CHANGE	APPROVE	OPERATION	DRAW	SIMON	2010.03.06	SCALE	UNIT	mm	PART NO.	PH100Hxx-SF-2xXXP
0	05/12/27	NEW			~ 10 ±0.15	DESIGN			SIZE	A4		TITLE	1.0mm Pin Header Dual Row Straight SMT Type
					20 ~ 30 ±0.30	CHECK	MICKY	2010.03.06	SHEET	1/1			
					30 ~ ±0.50	APPROVE	HELLEN	2010.03.06	PROJ.	◆ ←			
					Angle ± 2'								
					DIM TOL								

SCONDAR 森康达电子有限公司
 SCONDAR ELECTRONIC LIMITED